



## Rocky Mountain Remedies

4725 22nd AVE. N  
Great Falls, MT 59405  
bigskyweb@centric.net  
(406) 788-7913  
Lic. #C-100394-001

Sample: 2201FID0217.1330

Strain: Maui Wowie  
Batch #: 3; Lot #:

METRC Batch: 1A4080100003D58000000302; METRC Sample: 1A4080100003D58000000310  
Analysis Initiated: 01/26/2022; Report Created: 01/27/2022  
Sampling SOP: SOP-0050

## RMR\_MW\_01\_07-22

Plant, Flower - Cured, Indoor  
Harvest/Production Date: 01/19/2022



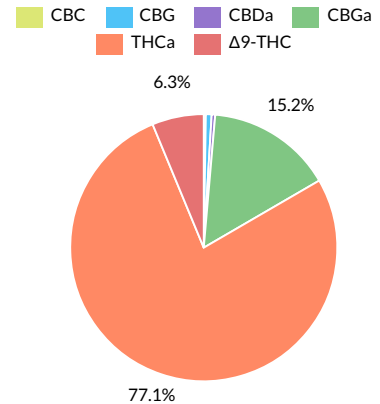
|  |   |                                     |                                   |
|--|---|-------------------------------------|-----------------------------------|
|  | <b>23.27%</b><br>Total Potential Psychoactive THC | <b>0.12%</b><br>Total CBD           | <b>Pass</b><br>Foreign Matter     |
|  | <b>26.26%</b><br>Total Raw THC                    | <b>31.49%</b><br>Total Cannabinoids | <b>Pass</b><br>10.89%<br>Moisture |

## Cannabinoids

Pass

Analytical Calibration Batch: Cannabinoids AF 01042022

| Analyte      | LOQ  | Mass         | Mass         |
|--------------|------|--------------|--------------|
|              | %    | %            | mg/g         |
| THCa         | 0.05 | 24.29        | 242.9        |
| Δ9-THC       | 0.05 | 1.97         | 19.7         |
| Δ8-THC       | 0.05 | ND           | ND           |
| THCV         | 0.05 | ND           | ND           |
| CBDa         | 0.05 | 0.13         | 1.3          |
| CBD          | 0.05 | ND           | ND           |
| CBN          | 0.05 | ND           | ND           |
| CBGa         | 0.05 | 4.80         | 48.0         |
| CBG          | 0.05 | 0.22         | 2.2          |
| CBC          | 0.05 | 0.08         | 0.8          |
| <b>Total</b> |      | <b>31.49</b> | <b>314.9</b> |



Total Potential Psychoactive THC = THCa \* 0.877 + d9-THC  
Total CBD = CBDa \* 0.877 + CBD

LOQ = Limit of Quantitation; NT = Not Tested; NR = Not Reported; ND = None Detected; PPM = Parts per Million; PPB = Parts per Billion; Unless otherwise stated all quality control samples performed within specifications established by the Laboratory.

SOP-0037; Full spectrum cannabinoid analysis by High Performance Liquid Chromatography with UV detection (HPLC-UV). Reported result is based on sample dry weight.

SOP-0035; Foreign matter inspection includes but is not limited to hair, insects, stems, and feces. Filth is inspected using a M16-209 stereoscope. Stem measurements are performed using fisher calipers.

SOP-0036; Moisture analysis is performed using a Shimadzu moisture analyzer MOC63u UL.



Fidelity Diagnostics Laboratory  
216 Trade St.  
Missoula, MT 59808  
(406) 926-2211  
http://www.fidimt.com  
License # L-100170-003



Andre Umansky  
Laboratory Director

Accredited to ISO/IEC 17025:2017  
Accreditation #: 102722

Confident Cannabis  
All Rights Reserved  
support@confidentcannabis.com  
(866) 506-5866  
www.confidentcannabis.com





## Rocky Mountain Remedies

4725 22nd AVE. N  
Great Falls, MT 59405  
bigskyweb@centric.net  
(406) 788-7913  
Lic. #C-100394-001

Sample: 2201FID0217.1330

Strain: Maui Wowie  
Batch #: 3; Lot #:

METRC Batch: 1A4080100003D58000000302; METRC Sample: 1A4080100003D58000000310  
Analysis Initiated: 01/26/2022; Report Created: 01/27/2022  
Sampling SOP: SOP-0050

## RMR\_MW\_01\_07-22

Plant, Flower - Cured, Indoor  
Harvest/Production Date: 01/19/2022

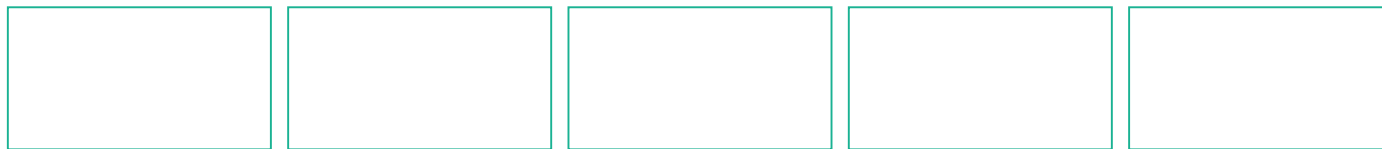


## Terpenes

Analytical Calibration Batch:

| Analyte | LOQ | Mass | Mass |
|---------|-----|------|------|
|---------|-----|------|------|

## Primary Aromas



LOQ = Limit of Quantitation; NT = Not Tested; NR = Not Reported; ND = None Detected; PPM = Parts per Million; PPB = Parts per Billion; The reported result is based on a sample weight with the applicable moisture content for that sample; Unless otherwise stated all quality control samples performed within specifications established by the Laboratory. SOP-0044; Terpenoid profile screen is performed using a Thermo Scientific TRACE 1300 Gas Chromatography instrument equipped with a Flame Ionization Detector (GC-FID).



Fidelity Diagnostics Laboratory  
216 Trade St.  
Missoula, MT 59808  
(406) 926-2211  
<http://www.fdimt.com>  
License # L-100170-003



Andre Umansky  
Laboratory Director

Accredited to ISO/IEC 17025:2017  
Accreditation #: 102722

Confident Cannabis  
All Rights Reserved  
[support@confidentcannabis.com](mailto:support@confidentcannabis.com)  
(866) 506-5866  
[www.confidentcannabis.com](http://www.confidentcannabis.com)





# Certificate of Analysis

## Rocky Mountain Remedies

4725 22nd AVE. N  
Great Falls, MT 59405  
bigskyweb@centric.net  
(406) 788-7913  
Lic. #C-100394-001

Sample: 2201FID0217.1330

Strain: Maui Wowie  
Batch #: 3; Lot #:

METRC Batch: 1A4080100003D58000000302; METRC Sample: 1A4080100003D58000000310  
Analysis Initiated: 01/26/2022; Report Created: 01/27/2022  
Sampling SOP: SOP-0050

## RMR\_MW\_01\_07-22

Plant, Flower - Cured, Indoor  
Harvest/Production Date: 01/19/2022



## Residual Solvents

Not Tested

Analytical Calibration Batch:

| Analyte | LOQ | State Limits | Mass | Status | Analyte | LOQ | State Limits | Mass | Status |
|---------|-----|--------------|------|--------|---------|-----|--------------|------|--------|
|---------|-----|--------------|------|--------|---------|-----|--------------|------|--------|

LOQ = Limit of Quantitation; The reported result is based on a sample weight with the applicable moisture content for that sample; Unless otherwise stated all quality control samples performed within specifications established by the Laboratory.  
SOP-0056; A wide spectrum analysis of Residual Solvents using Gas Chromatography Mass Spectrometry (Thermo Scientific ISQ7000 GCMS).

## Mycotoxins

Pass

Analytical Calibration Batch: 01/11/2022

| Analyte          | LOQ | State Limit | Mass | Status |
|------------------|-----|-------------|------|--------|
|                  | PPB | PPB         | PPB  |        |
| Ochratoxin A     | 12  | 20          | ND   | Pass   |
| Total Aflatoxins | 20  | 20          | ND   | Pass   |

## Microbials

Pass

| Analyte                              | Limit  | Mass  | Status |
|--------------------------------------|--------|-------|--------|
|                                      | CFU/g  | CFU/g |        |
| Aerobic Bacteria                     | 100000 | NR    | NT     |
| Aspergillus                          | 1      | NR    | NT     |
| Aspergillus flavus                   | 1      | NR    | NT     |
| Aspergillus fumigatus                | 1      | NR    | NT     |
| Aspergillus niger                    | 1      | NR    | NT     |
| Aspergillus terreus                  | 1      | NR    | NT     |
| Bile-Tolerant Gram-Negative Bacteria | 10000  | NR    | NT     |
| E. Coli                              | 1      | ND    | Pass   |
| Mold                                 | 10000  | ND    | Pass   |
| Salmonella                           |        | ND    | Pass   |

LOQ = Limit of Quantitation; The reported result is based on a sample weight with the applicable moisture content for that sample; Unless otherwise stated all quality control samples performed within specifications established by the Laboratory. SOP-0048; Mycotoxin screening is performed using Sciex 6500+ LCMSMS with Exion XR front HPLC.

LOQ = Limit of Quantitation; TNTC = Too Numerous to Count; Unless otherwise stated all quality control samples performed within specifications established by the Laboratory. SOP-0057: E.Coli, and Salmonella analysis on AriaDX qPCR using Medicinal Genomics validated methods. SOP-0061: Mold enumeration using Hardy Diagnostics media. SOP-0063: Aspergillus species specific analysis on AriaDX qPCR using Medicinal Genomics validated methods.



Fidelity Diagnostics Laboratory  
216 Trade St.  
Missoula, MT 59808  
(406) 926-2211  
http://www.fdimt.com  
License # L-100170-003



Andre Umansky  
Laboratory Director

Accredited to ISO/IEC 17025:2017  
Accreditation #: 102722

Confident Cannabis  
All Rights Reserved  
support@confidentcannabis.com  
(866) 506-5866  
www.confidentcannabis.com





## Rocky Mountain Remedies

4725 22nd AVE. N  
Great Falls, MT 59405  
bigskyweb@centric.net  
(406) 788-7913  
Lic. #C-100394-001

Sample: 2201FID0217.1330

Strain: Maui Wowie  
Batch #: 3; Lot #:

METRC Batch: 1A4080100003D58000000302; METRC Sample: 1A4080100003D58000000310  
Analysis Initiated: 01/26/2022; Report Created: 01/27/2022  
Sampling SOP: SOP-0050

## RMR\_MW\_01\_07-22

Plant, Flower - Cured, Indoor  
Harvest/Production Date: 01/19/2022



## Pesticides

Analytical Calibration Batch: 01/11/2022

Pass

| Analyte         | LOQ  | State Limit | Expanded Limit | Mass | Status |
|-----------------|------|-------------|----------------|------|--------|
|                 | PPM  | PPM         | PPM            | PPM  |        |
| Abamectin       | 0.12 | 0.5         | 0.5            | ND   | Pass   |
| Acequinocyl     | 0.12 | 2           | 2              | ND   | Pass   |
| Bifenazate      | 0.12 | 0.2         | 0.2            | ND   | Pass   |
| Bifenthrin      | 0.12 | 0.2         | 0.2            | ND   | Pass   |
| Chloromequat    | 0.12 | 1           | 1              | ND   | Pass   |
| Cyfluthrin      | 0.12 | 1           | 1              | ND   | Pass   |
| Daminozide      | 0.12 | 1           | 1              | ND   | Pass   |
| Etoxazole       | 0.12 | 0.2         | 0.2            | ND   | Pass   |
| Fenoxycarb      | 0.12 | 0.2         | 0.2            | ND   | Pass   |
| Imazalil        | 0.12 | 0.2         | 0.2            | ND   | Pass   |
| Imidacloprid    | 0.12 | 0.4         | 0.4            | ND   | Pass   |
| Myclobutanil    | 0.12 | 0.2         | 0.2            | ND   | Pass   |
| Paclobutrazol   | 0.12 | 0.4         | 0.4            | ND   | Pass   |
| Pyrethrins      | 0.12 | 1           | 1              | ND   | Pass   |
| Spinosad        | 0.12 | 0.2         | 0.2            | ND   | Pass   |
| Spirotetramat   | 0.12 | 0.2         | 0.2            | ND   | Pass   |
| Trifloxystrobin | 0.12 | 0.2         | 0.2            | ND   | Pass   |

LOQ = Limit of Quantitation; The reported result is based on a sample weight with the applicable moisture content for that sample; Unless otherwise stated all quality control samples performed within specifications established by the Laboratory. SOP-0048; Pesticide screening is performed using Sciex 6500+ LCMSMS with Exion XR front HPLC.



Fidelity Diagnostics Laboratory  
216 Trade St.  
Missoula, MT 59808  
(406) 926-2211  
http://www.fdimt.com  
License # L-100170-003



Andre Umansky  
Laboratory Director

Accredited to ISO/IEC 17025:2017  
Accreditation #: 102722

Confident Cannabis  
All Rights Reserved  
support@confidentcannabis.com  
(866) 506-5866  
www.confidentcannabis.com

