



Rocky Mountain Remedies


4725 22nd AVE. N
Great Falls, MT 59405
bigskyweb@centric.net
(406) 788-7913
Lic. #P-00430

Sample: 2010FID2896.18418

Strain: God Bud
Batch #: 1; Lot #:
METRC Batch: 1A4080100003D58000000147; METRC Sample: 1A4080100003D58000000155
Analysis Initiated: 10/13/2020; Report Created: 10/15/2020
Sampling SOP: SOP-0050

Buds God

Plant, Flower - Cured, Indoor
Harvest/Production Date:

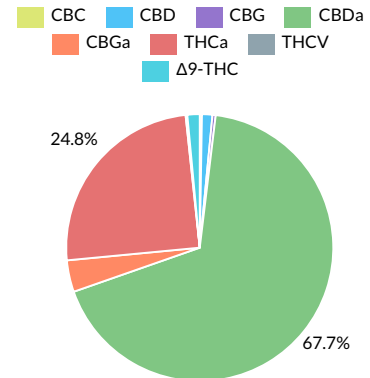
5.89% Total Potential Psychoactive THC	15.36% Total CBD	Pass Foreign Matter
6.66% Total Raw THC	25.31% Total Cannabinoids	Pass 10.9% Moisture

Cannabinoids

Complete

Analytical Calibration Batch: Cannabinoids AF 10122020

Analyte	LOQ	Mass	Mass
	%	%	mg/g
THCa	0.05	6.28	62.8
Δ 9-THC	0.05	0.38	3.8
Δ 8-THC	0.05	ND	ND
THCV	0.05	0.05	0.5
CBDa	0.05	17.14	171.4
CBD	0.05	0.32	3.2
CBN	0.05	ND	ND
CBGa	0.05	0.97	9.7
CBG	0.05	0.10	1.0
CBC	0.05	0.07	0.7
Total		25.31	253.1



Total Potential Psychoactive THC = THCa * 0.877 + Δ 9-THC
Total CBD = CBDa * 0.877 + CBD

LOQ = Limit of Quantitation; NT = Not Tested; NR = Not Reported; ND = None Detected; PPM = Parts per Million; PPB = Parts per Billion; The reported result is based on a sample weight with the applicable moisture content for that sample; Unless otherwise stated all quality control samples performed within specifications established by the Laboratory. SOP-0037; Full spectrum cannabinoid analysis utilizing Shimadzu Prominence High Performance Liquid Chromatography with UV detection (HPLC-UV).

SOP-0035; Foreign matter inspection includes but is not limited to hair, insects, stems, and feces. Filth is inspected using a M16-209 stereoscope. Stem measurements are performed using fisher calipers.

SOP-0036; Moisture analysis is performed using a Shimadzu moisture analyzer MOC63u UL.



Fidelity Diagnostics Laboratory
1001 North Russell St.
Missoula, MT 59808
(406) 926-2211
http://www.fidimt.com
License # L-00002



Andre Umansky
Laboratory Director

Accredited to ISO/IEC 17025:2017
Accreditation #: 102722

Confident Cannabis
All Rights Reserved
support@confidentcannabis.com
(866) 506-5866
www.confidentcannabis.com





Rocky Mountain Remedies

4725 22nd AVE. N
Great Falls, MT 59405
bigskyweb@centric.net
(406) 788-7913
Lic. #P-00430

Sample: 2010FID2896.18418

Strain: God Bud
Batch #: 1; Lot #:
METRC Batch: 1A4080100003D58000000147; METRC Sample: 1A4080100003D58000000155
Analysis Initiated: 10/13/2020; Report Created: 10/15/2020
Sampling SOP: SOP-0050

Buds God

Plant, Flower - Cured, Indoor
Harvest/Production Date:

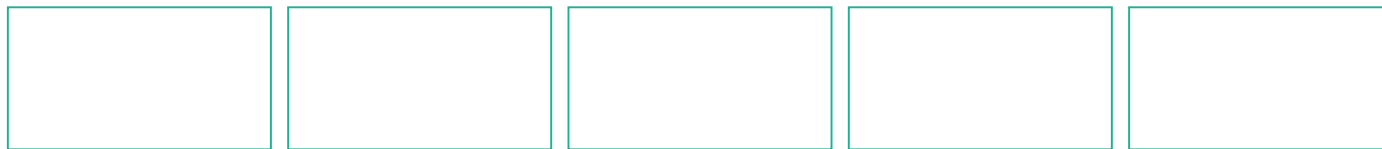


Terpenes

Analytical Calibration Batch:

Analyte	LOQ	Mass	Mass
---------	-----	------	------

Primary Aromas



LOQ = Limit of Quantitation; NT = Not Tested; NR = Not Reported; ND = None Detected; PPM = Parts per Million; PPB = Parts per Billion; The reported result is based on a sample weight with the applicable moisture content for that sample; Unless otherwise stated all quality control samples performed within specifications established by the Laboratory. SOP-0044; Terpenoid profile screen is performed using a Thermo Scientific TRACE 1300 Gas Chromatography instrument equipped with a Flame Ionization Detector (GC-FID).



Fidelity Diagnostics Laboratory
1001 North Russell St.
Missoula, MT 59808
(406) 926-2211
<http://www.fdimt.com>
License # L-00002



Andre Umansky
Laboratory Director

Accredited to ISO/IEC 17025:2017
Accreditation #: 102722

Confident Cannabis
All Rights Reserved
support@confidentcannabis.com
(866) 506-5866
www.confidentcannabis.com





Certificate of Analysis

Rocky Mountain Remedies

4725 22nd AVE. N
Great Falls, MT 59405
bigskyweb@centric.net
(406) 788-7913
Lic. #P-00430

Sample: 2010FID2896.18418

Strain: God Bud
Batch #: 1; Lot #:
METRC Batch: 1A4080100003D58000000147; METRC Sample: 1A4080100003D58000000155
Analysis Initiated: 10/13/2020; Report Created: 10/15/2020
Sampling SOP: SOP-0050

Buds God

Plant, Flower - Cured, Indoor
Harvest/Production Date:



Residual Solvents

Not Tested

Analytical Calibration Batch:

Analyte	LOQ	State Limits	Mass	Status	Analyte	LOQ	State Limits	Mass	Status
---------	-----	--------------	------	--------	---------	-----	--------------	------	--------

LOQ = Limit of Quantitation; The reported result is based on a sample weight with the applicable moisture content for that sample; Unless otherwise stated all quality control samples performed within specifications established by the Laboratory. SOP-0056; A wide spectrum analysis of Residual Solvents using Gas Chromatography Mass Spectrometry (Thermo Scientific ISQ7000 GCMS).

Mycotoxins

Pass

Analytical Calibration Batch: 10082020

Analyte	LOQ	State Limit	Mass	Status
	PPB	PPB	PPB	
Ochratoxin A	12	20	ND	Pass
Total Aflatoxins	20	20	ND	Pass

LOQ = Limit of Quantitation; The reported result is based on a sample weight with the applicable moisture content for that sample; Unless otherwise stated all quality control samples performed within specifications established by the Laboratory. SOP-0048; Mycotoxin screening is performed using Sciex 6500+ LCMSMS with Exion XR front HPLC.

Microbials

Pass

Analyte	Limit	Mass	Status
	CFU/g	CFU/g	
Mold	10000	802	Pass
Aerobic Bacteria	100000	NR	NT
Bile-Tolerant Gram-Negative Bacteria	10000	NR	NT
E. Coli	1	ND	Pass
Salmonella		ND	Pass

LOQ = Limit of Quantitation; TNC = Too Numerous to Count; Unless otherwise stated all quality control samples performed within specifications established by the Laboratory. SOP-0057: Mold, E.Coli, and Salmonella analysis on AriaDX qPCR using Medicinal Genomics validated methods. SOP-0061: Mold enumeration using Hardy Diagnostics media.



Fidelity Diagnostics Laboratory
1001 North Russell St.
Missoula, MT 59808
(406) 926-2211
http://www.fdimt.com
License # L-00002



Andre Umansky
Laboratory Director

Accredited to ISO/IEC 17025:2017
Accreditation #: 102722

Confident Cannabis
All Rights Reserved
support@confidentcannabis.com
(866) 506-5866
www.confidentcannabis.com





Certificate of Analysis

Rocky Mountain Remedies

4725 22nd AVE. N
Great Falls, MT 59405
bigskyweb@centric.net
(406) 788-7913
Lic. #P-00430

Sample: 2010FID2896.18418

Strain: God Bud
Batch #: 1; Lot #:
METRC Batch: 1A4080100003D58000000147; METRC Sample: 1A4080100003D58000000155
Analysis Initiated: 10/13/2020; Report Created: 10/15/2020
Sampling SOP: SOP-0050

Buds God

Plant, Flower - Cured, Indoor
Harvest/Production Date:



Pesticides

Analytical Calibration Batch: 10082020

Pass

Analyte	LOQ	State Limit	Expanded Limit	Mass	Status
	PPM	PPM	PPM	PPM	
Abamectin	0.12	0.5	0.5	ND	Pass
Acequinocyl	0.12	2	2	ND	Pass
Bifenazate	0.12	0.2	0.2	ND	Pass
Bifenthrin	0.12	0.2	0.2	ND	Pass
Chloromequat	0.12	1	1	ND	Pass
Cyfluthrin	0.12	1	1	ND	Pass
Daminozide	0.12	1	1	ND	Pass
Etoxazole	0.12	0.2	0.2	ND	Pass
Fenoxycarb	0.12	0.2	0.2	ND	Pass
Imazalil	0.12	0.2	0.2	ND	Pass
Imidacloprid	0.12	0.4	0.4	ND	Pass
Myclobutanil	0.12	0.2	0.2	ND	Pass
Paclobutrazol	0.12	0.4	0.4	ND	Pass
Pyrethrins	0.12	1	1	ND	Pass
Spinosad	0.12	0.2	0.2	<LOQ	Pass
Spiromesifen	0.12	0.2	0.2	ND	Pass
Spirotetramat	0.12	0.2	0.2	ND	Pass
Trifloxystrobin	0.12	0.2	0.2	ND	Pass

LOQ = Limit of Quantitation; The reported result is based on a sample weight with the applicable moisture content for that sample; Unless otherwise stated all quality control samples performed within specifications established by the Laboratory. SOP-0048; Pesticide screening is performed using Sciex 6500+ LCMSMS with Exion XR front HPLC.



Fidelity Diagnostics Laboratory
1001 North Russell St.
Missoula, MT 59808
(406) 926-2211
http://www.fidimt.com
License # L-00002



Andre Umansky
Laboratory Director

Accredited to ISO/IEC 17025:2017
Accreditation #: 102722

Confident Cannabis
All Rights Reserved
support@confidentcannabis.com
(866) 506-5866
www.confidentcannabis.com



This product has been tested by Fidelity Diagnostics using valid testing methodologies and a quality system as required by state law. Fidelity Diagnostics makes no claims as to the efficacy, safety or other risks associated with any detected or non-detected levels of any compounds reported herein. This Certificate shall not be reproduced except in full, without the written approval of Fidelity Diagnostics. Quality and uncertainty data available upon request. Sample conformity is established through "decision rule" which is set by the State. Version No. 001 []